



**ASSET & ENGINEERING
INFORMATION MANAGEMENT EXPERT**

ABOUT SALUR KUASA DIGITAL

Our ethos is to do right, the right way. Salur Kuasa Digital's Information Engineering discipline is multi-faceted with teams addressed to solve multi-disciplinary issues.

Combined with our highly professional site team in capturing 3D and 2D engineering data, Salur Kuasa Digital is apt for fast-track project implementation of providing intelligent engineering and data management services and solutions.

VALUE PROPOSITION

7x faster than conventional
(best-in-class accuracy & precision)

3x faster than 2D CAD

IR4.0

Building
Conditional
Assessment

Heritage
Building
Conservation

HIGHLIGHTS

- Digitisation and conversion of engineering documents.
- As-Built 3D & 2D engineering information using laser scanning, photogrammetry, and visually recorded site verification activities.
- Semi-Intelligent and Full-Intelligent modelling.

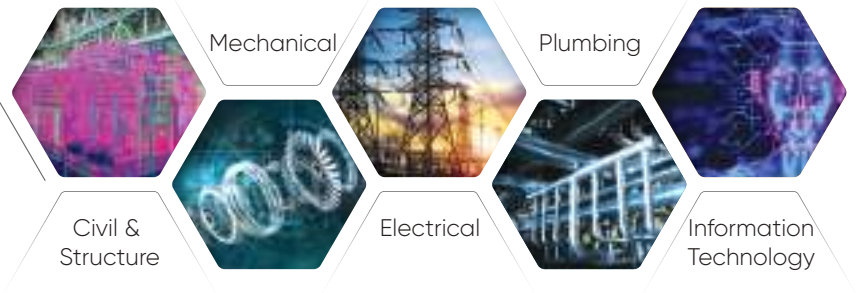
OUR SERVICES

VISUAL DATA INFORMATION (Superior & Leading Edge Photography and Photogrammetry)

Simple & Single Source

- SCAN
- PROCESS
- ACCESS

Disciplinary:



DATA
CAPTURE

DATA
PROCESSING

3D
WALKTHROUGH

AS-BUILT
ENGINEERING

MODIFICATION
& PROGRESS
MONITORING



360° 4K HDR View



Floor Plan View



Doll House View



Elevator View



3D Walkthrough



As-Built Engineering Drawing



Data Interoperability



Information Tag

OUR SERVICES

ENGINEERING SOLUTIONS

AS-BUILT DATA CAPTURE



— VALIDATION REPORT



— SURVEY REPORT



— 360° COLOUR HDR
DATA CAPTURE



AS-BUILT DATA PROCESSING



— GOOD QA/QC &
ISO CERTIFICATION



— DATA INTEROPERABILITY &
OPTIMISED ENGINEERING



AS-BUILT ENGINEERING

2D SCHEMATIC & 3D MODELLING



— SINGLE SOURCE
DATABASE DRIVEN



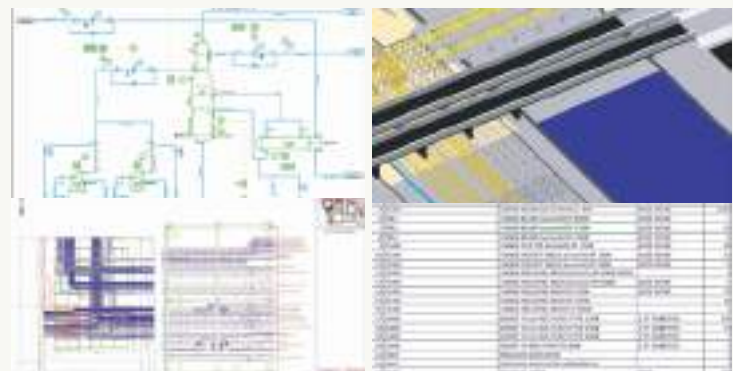
— AUTOMATED &
RULE BASED



— ELIMINATE ERRORS &
DESIGN CHECK



— MODIFICATIONS ENABLE
FOR FUTURE UPGRADE



ENGINEERING REVIEW

2D SCHEMATIC & 3D MODEL REVIEW



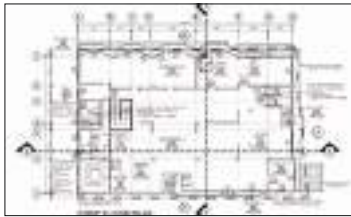
— EXCELLENT MODEL
REVIEW



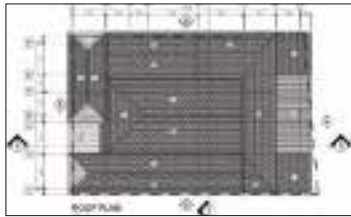
OUR SERVICES

BUILDING PLAN and **LAYOUT DRAWING** production for authority approval

BUILDING PLAN



Floor Plan



Roof Plan



Cross Section



Elevation

ITEM NO.	DESCRIPTION	UNIT	QUANTITY	UNIT PRICE	TOTAL
1	CEILING	SQ. FT.	1000	1.50	1500.00
2	FLOOR	SQ. FT.	2000	2.00	4000.00
3	WALL	SQ. FT.	3000	3.00	9000.00
4	DOOR	NO.	10	100.00	1000.00
5	WINDOW	NO.	20	50.00	1000.00
6	ROOF	SQ. FT.	1500	1.00	1500.00
7	FOUNDATION	SQ. FT.	500	2.00	1000.00
8	PAINT	SQ. FT.	10000	0.10	1000.00
9	LABOR	HOUR	1000	10.00	10000.00
10	MATERIAL	TON	100	100.00	10000.00
11	TRANSPORT	TRUCK	10	100.00	1000.00
12	PERMIT	NO.	1	1000.00	1000.00
13	INSURANCE	NO.	1	500.00	500.00
14	DESIGN	NO.	1	2000.00	2000.00
15	CONSTRUCTION	NO.	1	10000.00	10000.00
16	MAINTENANCE	NO.	1	500.00	500.00
17	DEMOLITION	NO.	1	1000.00	1000.00
18	REPAIR	NO.	1	500.00	500.00
19	RENOVATION	NO.	1	1000.00	1000.00
20	RESTORATION	NO.	1	500.00	500.00
21	RECONSTRUCTION	NO.	1	1000.00	1000.00
22	REPAIR AND MAINTENANCE	NO.	1	500.00	500.00
23	REPAIR AND MAINTENANCE	NO.	1	500.00	500.00
24	REPAIR AND MAINTENANCE	NO.	1	500.00	500.00
25	REPAIR AND MAINTENANCE	NO.	1	500.00	500.00
26	REPAIR AND MAINTENANCE	NO.	1	500.00	500.00
27	REPAIR AND MAINTENANCE	NO.	1	500.00	500.00
28	REPAIR AND MAINTENANCE	NO.	1	500.00	500.00
29	REPAIR AND MAINTENANCE	NO.	1	500.00	500.00
30	REPAIR AND MAINTENANCE	NO.	1	500.00	500.00
31	REPAIR AND MAINTENANCE	NO.	1	500.00	500.00
32	REPAIR AND MAINTENANCE	NO.	1	500.00	500.00
33	REPAIR AND MAINTENANCE	NO.	1	500.00	500.00
34	REPAIR AND MAINTENANCE	NO.	1	500.00	500.00
35	REPAIR AND MAINTENANCE	NO.	1	500.00	500.00
36	REPAIR AND MAINTENANCE	NO.	1	500.00	500.00
37	REPAIR AND MAINTENANCE	NO.	1	500.00	500.00
38	REPAIR AND MAINTENANCE	NO.	1	500.00	500.00
39	REPAIR AND MAINTENANCE	NO.	1	500.00	500.00
40	REPAIR AND MAINTENANCE	NO.	1	500.00	500.00
41	REPAIR AND MAINTENANCE	NO.	1	500.00	500.00
42	REPAIR AND MAINTENANCE	NO.	1	500.00	500.00
43	REPAIR AND MAINTENANCE	NO.	1	500.00	500.00
44	REPAIR AND MAINTENANCE	NO.	1	500.00	500.00
45	REPAIR AND MAINTENANCE	NO.	1	500.00	500.00
46	REPAIR AND MAINTENANCE	NO.	1	500.00	500.00
47	REPAIR AND MAINTENANCE	NO.	1	500.00	500.00
48	REPAIR AND MAINTENANCE	NO.	1	500.00	500.00
49	REPAIR AND MAINTENANCE	NO.	1	500.00	500.00
50	REPAIR AND MAINTENANCE	NO.	1	500.00	500.00
51	REPAIR AND MAINTENANCE	NO.	1	500.00	500.00
52	REPAIR AND MAINTENANCE	NO.	1	500.00	500.00
53	REPAIR AND MAINTENANCE	NO.	1	500.00	500.00
54	REPAIR AND MAINTENANCE	NO.	1	500.00	500.00
55	REPAIR AND MAINTENANCE	NO.	1	500.00	500.00
56	REPAIR AND MAINTENANCE	NO.	1	500.00	500.00
57	REPAIR AND MAINTENANCE	NO.	1	500.00	500.00
58	REPAIR AND MAINTENANCE	NO.	1	500.00	500.00
59	REPAIR AND MAINTENANCE	NO.	1	500.00	500.00
60	REPAIR AND MAINTENANCE	NO.	1	500.00	500.00
61	REPAIR AND MAINTENANCE	NO.	1	500.00	500.00
62	REPAIR AND MAINTENANCE	NO.	1	500.00	500.00
63	REPAIR AND MAINTENANCE	NO.	1	500.00	500.00
64	REPAIR AND MAINTENANCE	NO.	1	500.00	500.00
65	REPAIR AND MAINTENANCE	NO.	1	500.00	500.00
66	REPAIR AND MAINTENANCE	NO.	1	500.00	500.00
67	REPAIR AND MAINTENANCE	NO.	1	500.00	500.00
68	REPAIR AND MAINTENANCE	NO.	1	500.00	500.00
69	REPAIR AND MAINTENANCE	NO.	1	500.00	500.00
70	REPAIR AND MAINTENANCE	NO.	1	500.00	500.00
71	REPAIR AND MAINTENANCE	NO.	1	500.00	500.00
72	REPAIR AND MAINTENANCE	NO.	1	500.00	500.00
73	REPAIR AND MAINTENANCE	NO.	1	500.00	500.00
74	REPAIR AND MAINTENANCE	NO.	1	500.00	500.00
75	REPAIR AND MAINTENANCE	NO.	1	500.00	500.00
76	REPAIR AND MAINTENANCE	NO.	1	500.00	500.00
77	REPAIR AND MAINTENANCE	NO.	1	500.00	500.00
78	REPAIR AND MAINTENANCE	NO.	1	500.00	500.00
79	REPAIR AND MAINTENANCE	NO.	1	500.00	500.00
80	REPAIR AND MAINTENANCE	NO.	1	500.00	500.00
81	REPAIR AND MAINTENANCE	NO.	1	500.00	500.00
82	REPAIR AND MAINTENANCE	NO.	1	500.00	500.00
83	REPAIR AND MAINTENANCE	NO.	1	500.00	500.00
84	REPAIR AND MAINTENANCE	NO.	1	500.00	500.00
85	REPAIR AND MAINTENANCE	NO.	1	500.00	500.00
86	REPAIR AND MAINTENANCE	NO.	1	500.00	500.00
87	REPAIR AND MAINTENANCE	NO.	1	500.00	500.00
88	REPAIR AND MAINTENANCE	NO.	1	500.00	500.00
89	REPAIR AND MAINTENANCE	NO.	1	500.00	500.00
90	REPAIR AND MAINTENANCE	NO.	1	500.00	500.00
91	REPAIR AND MAINTENANCE	NO.	1	500.00	500.00
92	REPAIR AND MAINTENANCE	NO.	1	500.00	500.00
93	REPAIR AND MAINTENANCE	NO.	1	500.00	500.00
94	REPAIR AND MAINTENANCE	NO.	1	500.00	500.00
95	REPAIR AND MAINTENANCE	NO.	1	500.00	500.00
96	REPAIR AND MAINTENANCE	NO.	1	500.00	500.00
97	REPAIR AND MAINTENANCE	NO.	1	500.00	500.00
98	REPAIR AND MAINTENANCE	NO.	1	500.00	500.00
99	REPAIR AND MAINTENANCE	NO.	1	500.00	500.00
100	REPAIR AND MAINTENANCE	NO.	1	500.00	500.00

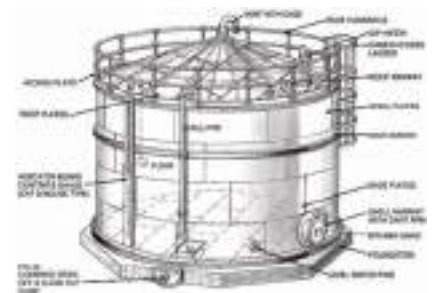
Calculation of Natural Lighting and Ventilation/Others

LAYOUT DRAWING

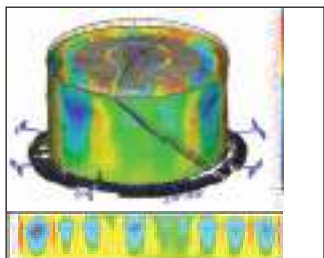


TANK INSPECTION SERVICES

Tank inspections services cover "In-Service-Inspections" ("ISI") and "Out-of-Service-Inspections" ("OOSI") above ground storage tanks. Covers comprehensive storage tank inspection, reporting on the overall condition of tank floors, shells, roofs and structures. The inspection reports include engineering calculations in accordance with API 653 & 650 and other requirements based on client needs.



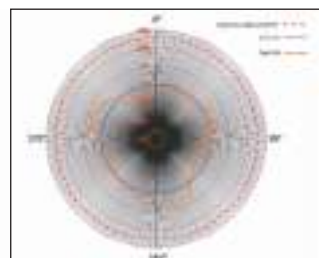
Shell Condition



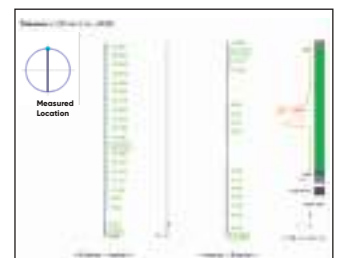
Differential Settlement



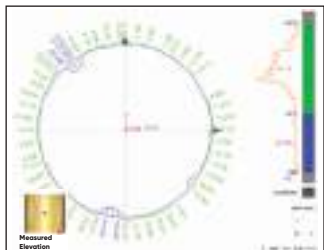
Plumbness 360°



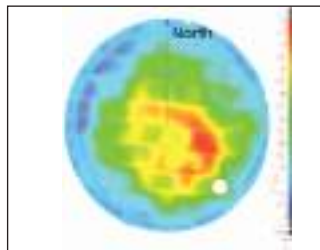
Verticality



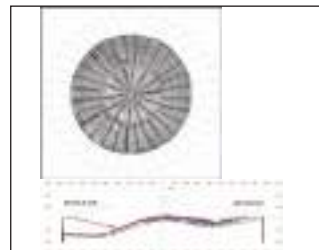
Roundness



Bottom Shell



Structural



Finite Element Analysis



PROJECTS

LOCAL



01 | Malaysia Airports Holdings Berhad (MAHB)

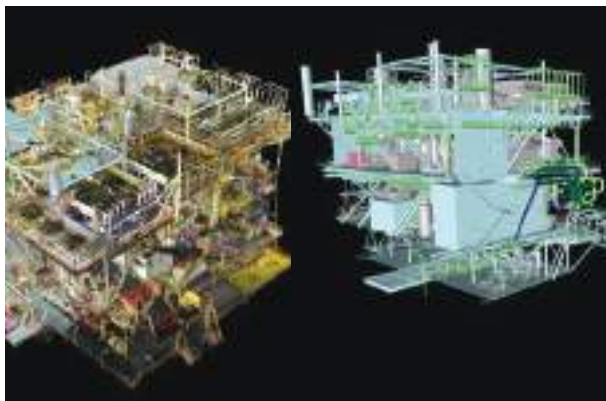
April 2021, Siemens Logistics

As Built Data Capture for KLIA Baggage Handling System at KLIA Airport Sepang.

02 | Vestigo Petroleum Sdn. Bhd.

Sept 2019 - Dec 2020, Salur Kuasa Sdn Bhd.

3D Laser Scanning & Draughting Services for Vestigo's Marginal Field Facilities (Berantai, Larut & Bentara).



03 | Sarawak Shell Berhad (SSB), Miri

Oct 2018 – Jan 2019, Sedia Teguh Sdn Bhd.

FEED: 3D Laser Scanning & 3D Modelling at E11-KA Platform for Brownfield Tie-in.

Dec 2016 - July 2017, Sedia Teguh Sdn Bhd.

Teja & Gorek Development: 3D Laser Scanning & 3D Modelling at F6-KA & F6-PA platforms.

Aug 2016 – Jan 2017, Sedia Teguh Sdn Bhd.

Teja & Gorek Development: 3D Laser Scanning & 3D Modelling at F6 Complex for Brownfield Tie-in.

04 | Chevron Malaysia Limited

Dec 2018, H. Rosen Engineering Sdn Bhd

Tank Inspection: 3D Laser Scanning at Perai Chevron Oil Terminal.



05 | TNB Janamanjung Sdn. Bhd. (TNBJ)

March 2018 – June 2018, Salur Kuasa Sdn Bhd

Coalyard Stockpile Site – Terrestrial Laser Scanning and Total Station Survey.

Dec 2017, Salur Kuasa Sdn Bhd

Coalyard Stockpile Site – Terrestrial Laser Scanning, Total Station Survey and UAV Mapping.

06 | Tenaga Nasional Berhad (TNB)

March 2018 – April 2018

TNB: Grid Division, Salur Kuasa Sdn Bhd

Utility Mapping 3D Modelling for TNB PMU Temasya, Glenmarie Shah Alam.

March 2018 – April 2018

TNB: Grid Division, Salur Kuasa Sdn Bhd

Utility Mapping 3D Modelling for TNB PMU Kampung Lanjut, Kuala Lumpur.

Feb 2018 – March 2018

TNB: Grid Division, Salur Kuasa Sdn Bhd

Aerial Data Capture and 3D Modelling for Icon City Tunnel from Substation.

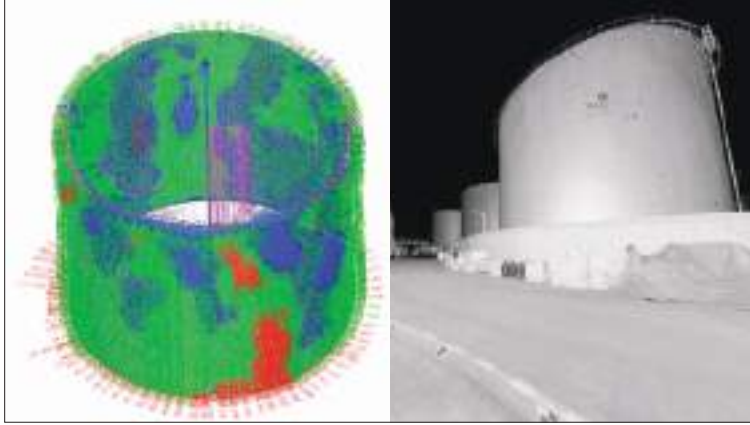


PROJECTS

INTERNATIONAL

01 | Chevron Hong Kong Limited

Jan 2019, H.Rosen Engineering Sdn Bhd.
3D Laser Scanning at Chevron Tsing Yi Oil Terminal.



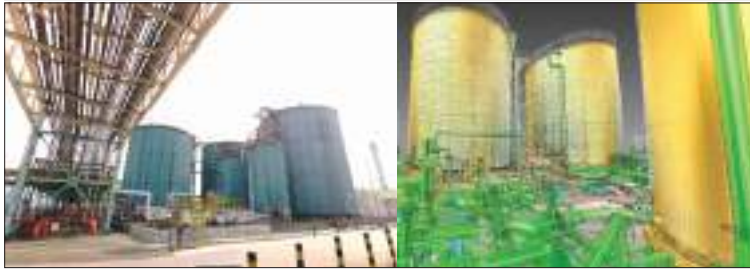
02 | Chevron Philippines Inc

July - Aug 2019, H.Rosen Engineering Sdn Bhd.
3D Laser Scanning at Poro Point Depot & Chevron Sasa JO Terminal, Phillipines.



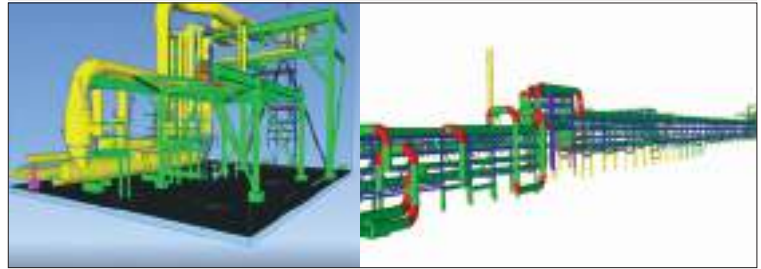
03 | Shell Tsing Yi, Hong Kong

Apr 2019 - Aug 2019, H.Rosen Engineering Sdn Bhd.
3D Laser Scanning & Isometric Drawing Productions.



04 | PTT (Public) Co. Ltd

Aug 2016 – July 2017, SKIES Data Services Company Ltd
As-Built Pipe Rack Corridors for PTT Plant in Rayong Thailand.



05 | SCG Chemicals Company Limited

Jan 2017 - Dec 2017, SKIES Data Services Company Ltd
As-Built Existing Plant Model from 3D Laser Scanning into intelligent Plant Models at Rayong, Thailand.



06 | Bangchak Petroleum Public Company Limited

Dec 2016 - Dec 2017, SKIES Data Services Company Ltd
3D Laser Scanning & 3D Modelling at Bangchak Refinery, Bangkok, Thailand.



07 | Royal Commission For Jubail & Yanbu

June 2015 - Mar 2017, Velosi Plant Design Engineers Sdn Bhd
Database Management Systems for the Pipeline Corridors for Jubail 1, Jubail 2 and KFIP.

